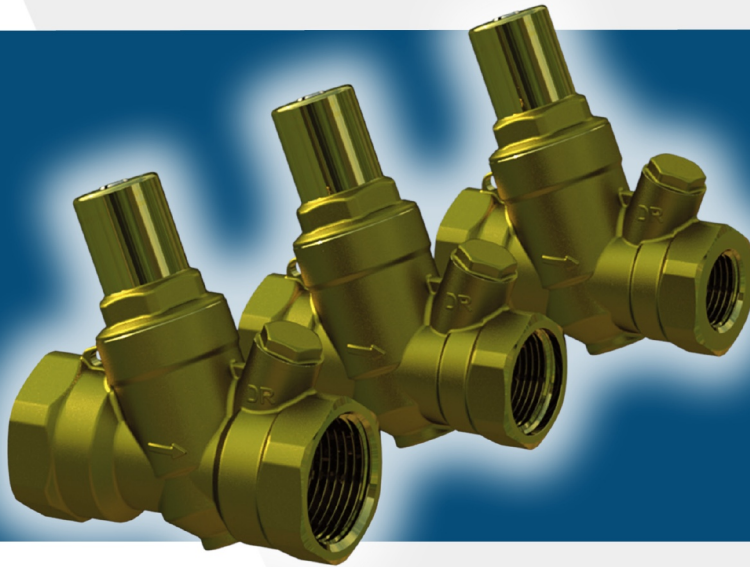


## Pressure Reduction Valve PRV



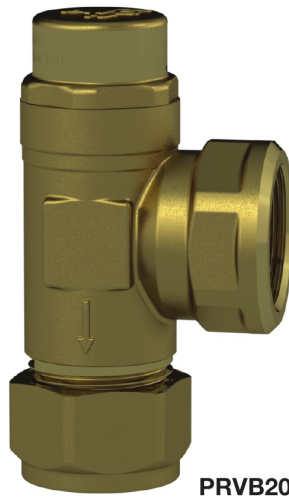
A pressure reduction valve (PRV) can be a valuable addition to many piping systems. If the incoming water pressure is too high, this can put unnecessary strain on water heaters, pipe work, plumbing joints, taps and tap washers. It can increase the risk of burst hoses on washing machines, water leaks and possibly magnify any existing water hammer problems.

The valves are factory set at 500 kPa. The down stream pressure is adjustable from 250 to 650 kPa by turning the screw on top. Clockwise to increase pressure and anticlockwise to reduce pressure. For pressure monitoring, there are three gauge ports standard on the body of the valve so that a gauge can be fitted to monitor the upstream and downstream pressure.

The tagging eye has been cast into the PRV body to allow the valve to be identified and tagged for mechanical service.

# PRVB

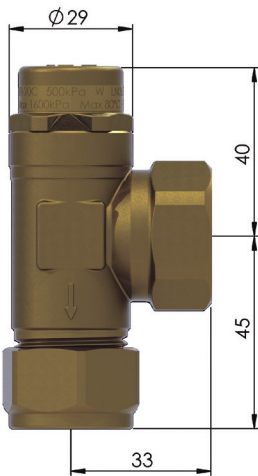
The PRVB is designed to limit the water pressure to a domestic dwelling to around 500 kPa. When water supply is flowing the PRVB will allow a full flow through the downstream pipe work. When all the downstream taps are isolated the PRVB will control the static pressure to the valve's set pressure.



PRVB20-500C



PRVB20-500FL



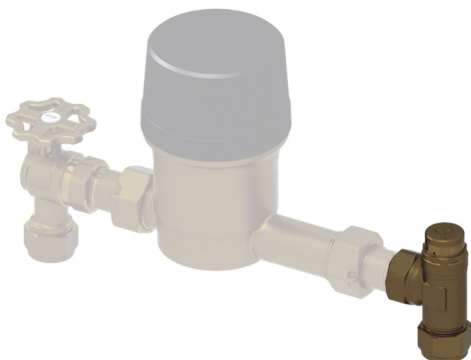
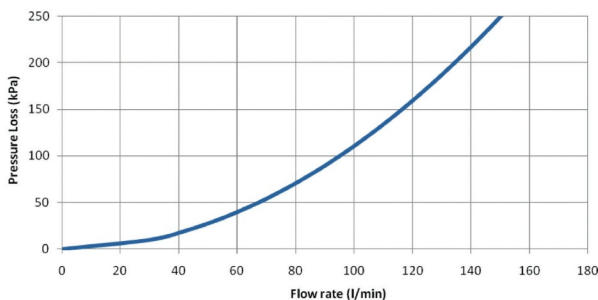
## Specifications

Flow rating:	170 l/min, as per AS1357.2
Set pressure:	500kPa, at 1600kPa Inlet Pressure
Max. operating temp.:	80°C
Connections:	20mm Female BSP to 20mm Compression
Watermark:	WMKA2639

## Features

- Body made of D.R Brass
- Superior flow capacity, 170 l/min as per AS1357.2
- Low profile – compact design
- Stainless steel seat
- Metal cap for protection of the valve

## PRESSURE COMPARISON



## Installation Instructions

- AVG valves should always be installed by a licensed plumber in accordance with National Plumbing and Drainage Code AS/NZS 3500 and comply with any Local Authority requirements.
- Flush all pipe work before installing valve.
- Install the PRVB with the direction of flow, as indicated by the arrow on the valve body.
- The valve should be installed where it is easily accessible.
- Suitable for installation below ground in a suitable approved box.
- Do not expose a PRVB to a torch flame or heat. Excessive heat will destroy the seals and sealing components.

DISCLAIMER: Every care has been taken in the preparation of these instructions, which have been issued as a guide only. Compliance with the requirements of local Authorities is required at all times. These requirements may change from time to time. Always be aware of the local requirements. Subject to any statutory obligations and manufacturers warranties no liability can be accepted for any losses, consequential or otherwise which may arise or be said to have arisen from relying upon the contents of this installation instruction as to the fitness of any particular product for any particular purpose, use or application. The Australian Valve Group Pty Ltd reserves the right to modify designs and specifications and to withdraw and introduce products at any time without notice.

info@valvewarehouseaustralia.com.au

03 9421 0042

Valve Warehouse ABN 33 632 515 149

## Warranty

### 24 months

