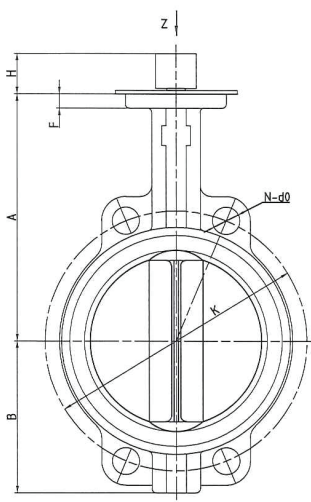


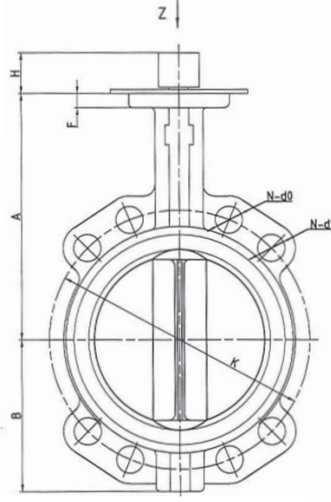
Lever Operated Butterfly Valve

Wafer - Ductile Iron - 316 SS Disk - EPDM Seat

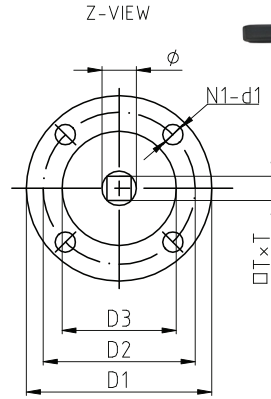
PRODUCT DATASHEET



Sizes: 2" to 3" & 5" to 8"



Sizes: 4"



Materials

#	PART	MATERIAL
1	Body	Ductile Iron
2	Lower Bushing	Bronze
3	Stem	Stainless Steel 420
4	Seat	EPDM
5	Disc	Stainless Steel CF8M
6	Long Bushings	PTFE
7	Rivet	L3
8	Tag	Stainless Steel 304
9	Short Bushings	Bronze
10	O-ring	NBR
11	Split Ring	Gr 33
12	Circlip	Gr 33
13	Handle	Cast Iron

Specifications

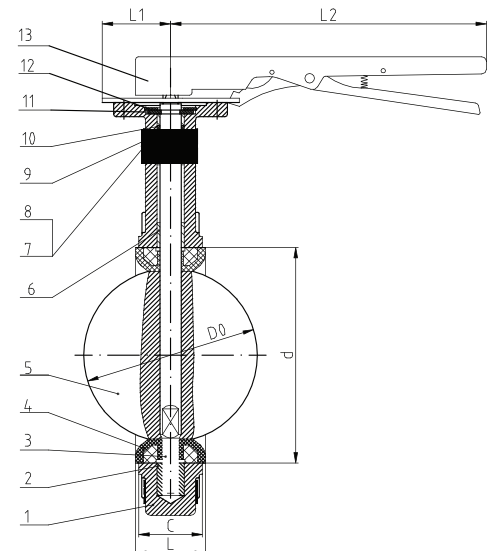
- Max Cold Working Pressure: 1600 kPa (16 Bar)
- Flange drilling is Table E except for the 100mm (4") size, which is drilled Table D & E
- Top Flange: ISO 5211

Features

- Suitable for water and wastewater treatment and general industry.
- The thin compact butterfly valve body allows for easy installation in tight areas.
- When released the lever locks into position via a notch plate.

Dimensions (mm)

Size	A	B	H	C	L	DO	d	K	N-d0	F	D1
50mm (2")	161	80	28	43	46	52.6	73.3	114	4-18	13	65
65mm (2 1/2")	175	89	28	46	49	64.3	86	127	4-18	13	65
80mm (3")	181	95	28	46	49	78.8	100.9	146	4-22	13	65
100mm (4")	200	114	28	52	55	104	132	178	4-18	13	90
125mm (5")	213	127	28	56	59	123.3	156	210	4-18	13	90
150mm (6")	226	139	28	56	59	155.7	185.4	235	4-23	13	90
200mm (8")	260	175	38	60	64	202.4	235.2	292	4-23	15	125
Size	D2	D3	N1-d1	O	OTXT	L1	L2	N-d1	Class		
50mm (2")	50	35	4-7	12.6	9x9	52	267	-	PN16		
65mm (2 1/2")	50	35	4-7	12.6	9x9	52	267	-	PN16		
80mm (3")	50	35	4-7	12.6	9x9	52	267	-	PN16		
100mm (4")	70	55	4-10	15.77	11	52	267	4-18	PN16		
125mm (5")	70	55	4-10	18.92	14x14	52	267	-	PN16		
150mm (6")	70	55	4-10	18.92	14x14	52	267	-	PN16		
200mm (8")	102	70	4-12	2.1	17x17	75	359	-	PN16		



Warranty

24 months

For Further Information

info@valvewarehouseaustralia.com.au

03 9421 0042

Valve Warehouse ABN 33 632 515 149