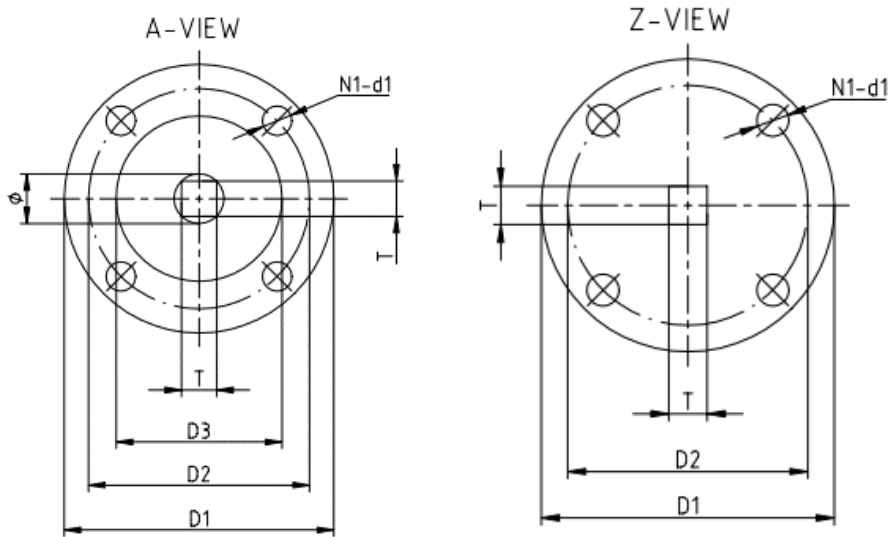


# Butterfly Valve Extension 1.5m Long

Ductile Iron Extension

PRODUCT DATASHEET



## Specifications

- Max Cold Working Pressure: 1600 kPa (16 Bar)
- Suitable for Lever & Gear Operated Butterfly Valves
- Fusion Bonded Epoxy (FBE) coated

## Materials

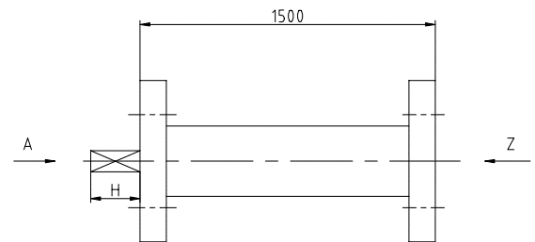
#	Part	Material
1	Body	Carbon Steel

## Features

- Suitable for water and wastewater treatment and general industry.
- The extension allows a butterfly valve to be operated that's installed below ground level.

## Dimensions (mm)

Size	D1	D2	D3	N1-d1	O	T	H	Class
100mm (4")	90	70	55	4-10	15.77	11	28	PN16
125mm (5")	90	70	55	4-10	18.92	14	28	PN16
150mm (6")	90	70	55	4-10	18.92	14	28	PN16
200mm (8")	125	102	70	4-12	22.1	17	38	PN16
250mm (10")	125	102	70	4-12	28.45	22	38	PN16
300mm (12")	125	102	70	4-12	31.6	22	38	PN16
350mm (14")	150	125	85	4-14	31.6	22	45	PN16
400mm (16")	175	140	100	4-18	37.95	27	60	PN16
450mm (18")	175	140	100	4-18	42.86	27	60	PN16



## Warranty

24 months

### For Further Information

info@valvewarehouseaustralia.com.au

03 9421 0042

Valve Warehouse ABN 33 632 515 149